

LEGEND

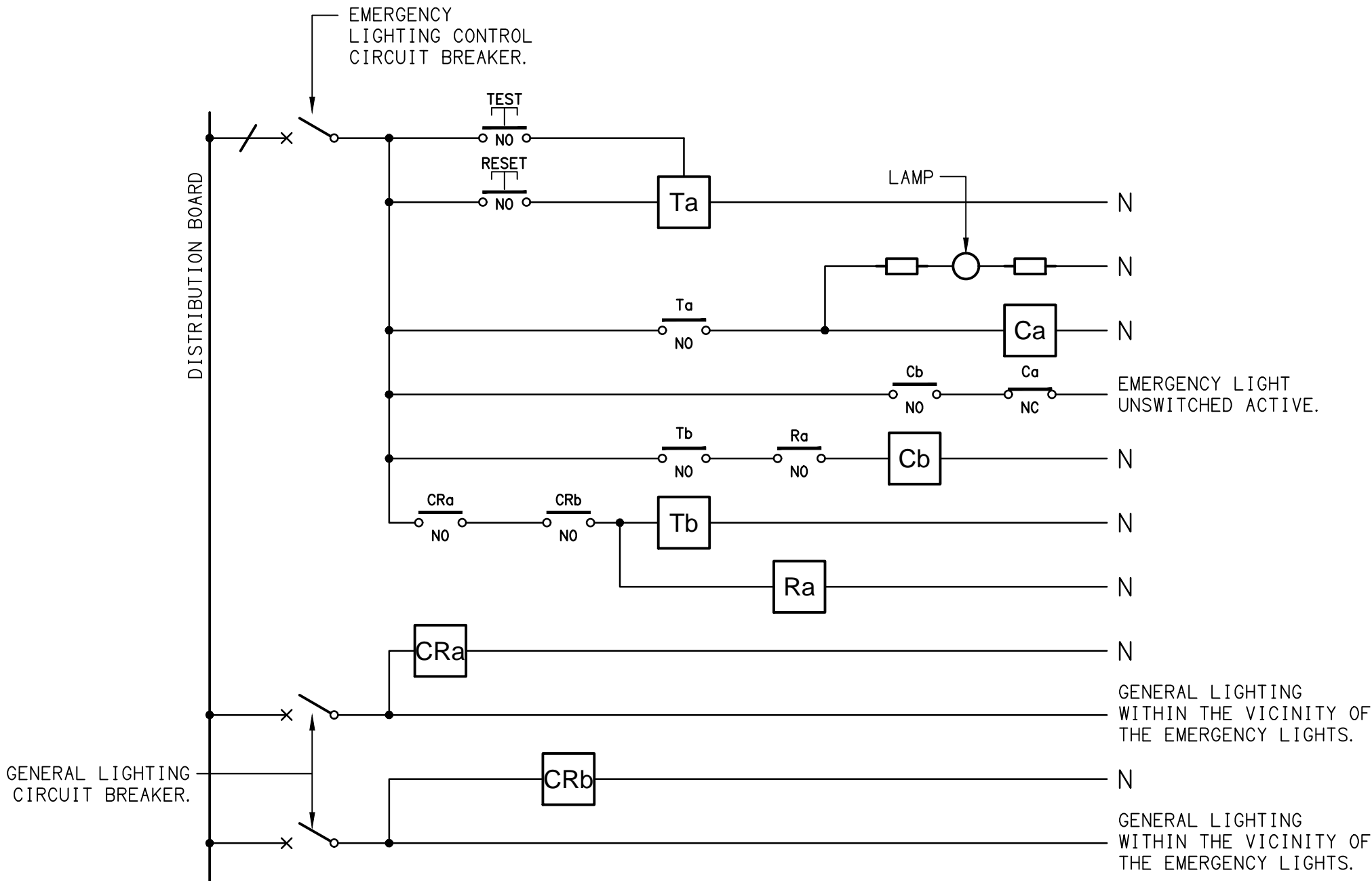
- ELECTRICAL SERVICES SWITCHBOARD.
- SWITCHBOARD / CONTROL PANEL NOT PROVIDED AS PART OF THE ELECTRICAL SUBCONTRACT.
- SINGLE POWER OUTLET.
- DOUBLE POWER OUTLET.
- GAMING / TAB POWER OUTLET BY GAMING ELECTRICIAN.
- SIGNAGE CONNECTION.
- SINGLE PHASE ISOLATOR.
- THREE PHASE ISOLATOR.
- GAMING JUNCTION BOX.
- CONDUIT ROUTE.
- LIGHTING CONTROL SWITCHPANEL, TYPE x.
- ONE-WAY LIGHT SWITCH.
- TWO-WAY LIGHT SWITCH.
- CIRCUIT LINE.
- SWITCH LINE.
- POWER CIRCUIT DESIGNATION.
DENOTES DB AND CIRCUIT.
- LIGHTING CONTROL CHANNEL REFERENCE.
- ELECTRICAL EQUIPMENT AS NOTED.
- REFER TO DETAIL NOTED FOR THE AREA SHOWN HATCHED.
ADDITIONAL OUTLETS & FITTINGS MAY BE SHOWN ON DETAIL.
- Sx: LED STRIP LIGHT, TYPE AS NOTED.
- E1: GENERAL RECESSED LED EMERGENCY LIGHT, WHITE.
- E2: GENERAL RECESSED LED EMERGENCY LIGHT, BLACK.
- EX: EMERGENCY LED EXIT LIGHT, WHITE UNLESS NOTED AS BLACK (BK).
- PD01: DECORATIVE SUSPENDED PENDANT.
- PD02: DECORATIVE SUSPENDED PENDANT.
- PD03: 6-LAMP DECORATIVE SUSPENDED PENDANT.
- PD04: 8-LAMP DECORATIVE SUSPENDED PENDANT.
- PD05: 6-LAMP DECORATIVE SUSPENDED PENDANT.
- PD06: 3-LAMP DECORATIVE SUSPENDED PENDANT.
- PD07: DECORATIVE SUSPENDED PENDANT.
- PD08: NO LONGER REQUIRED.
- PD09: DECORATIVE SUSPENDED PENDANT.
- PD10: DECORATIVE SUSPENDED PENDANT.
- PD11: DECORATIVE SUSPENDED PENDANT.
- TL01: SUSPENDED LIGHTING TRACK C/W LIGHTS AS INDICATED.
- WL01: WALL LIGHT, BRASS.
- WL02: WALL LIGHT, BRASS.
- WL03: NOT USED.

LEGEND

- WL04: WALL LIGHT, BRASS.
- WL05: WALL LIGHT, BLACK.
- WL06: WALL LIGHT, BLACK.
- WL07: WALL LIGHT, BRONZE.
- WL08: WALL LIGHT, BRASS.
- WL09: EXISTING WALL LIGHT TO REMAIN.
- SL01: SURFACE MOUNTED DOWNLIGHT, WHITE.
- SL02: SURFACE MOUNTED DOWNLIGHT, BRONZE.
- RD01: RECESSED DOWNLIGHT, WHITE.
- RD02: RECESSED DOWNLIGHT, BLACK.
- RD03: RECESSED ADJUSTABLE DOWNLIGHT, WHITE.
- RD04: RECESSED ADJUSTABLE DOWNLIGHT, WHITE.
- RD05: RECESSED DOWNLIGHT, WHITE.
- RD06: EXISTING AMENITY RECESSED DOWNLIGHT TO REMAIN.
- RD07: EXISTING EXTERNAL RECESSED DOWNLIGHT TO REMAIN.
- FS01: FESTOON LIGHTING FIXED TO STAINLESS STEEL SUPPORT, BLACK.
- GL01: GARDEN SPIKE LIGHT, BLACK.
- HR01: WALL MOUNTED HEATER, BLACK.
- HC1: HEATER CONTROLLER.
- F1: CEILING FAN, BLACK.
- FC1: CEILING FAN CONTROLLER.

EQUIPMENT:

- TEST – TEST PUSH BUTTON MOUNTED ON THE DISTRIBUTION BOARD ESCUTCHEON.
- RESET – RESET PUSH BUTTON MOUNTED ON THE DISTRIBUTION BOARD ESCUTCHEON.
- LAMP – AMBER TEST INDICATING LAMP MOUNTED ON THE DISTRIBUTION BOARD ESCUTCHEON.
- Ta – ADJUSTABLE 0-3 HOUR TIMED RELAY.
- Tb – 15 MINUTE RUN-ON TIMER TO OPERATE UPON THE RETURN OF MAINS POWER.
- Cx – CONTACTOR x.
- CRx – CONTROL RELAY x.
- Rx – RELAY x.



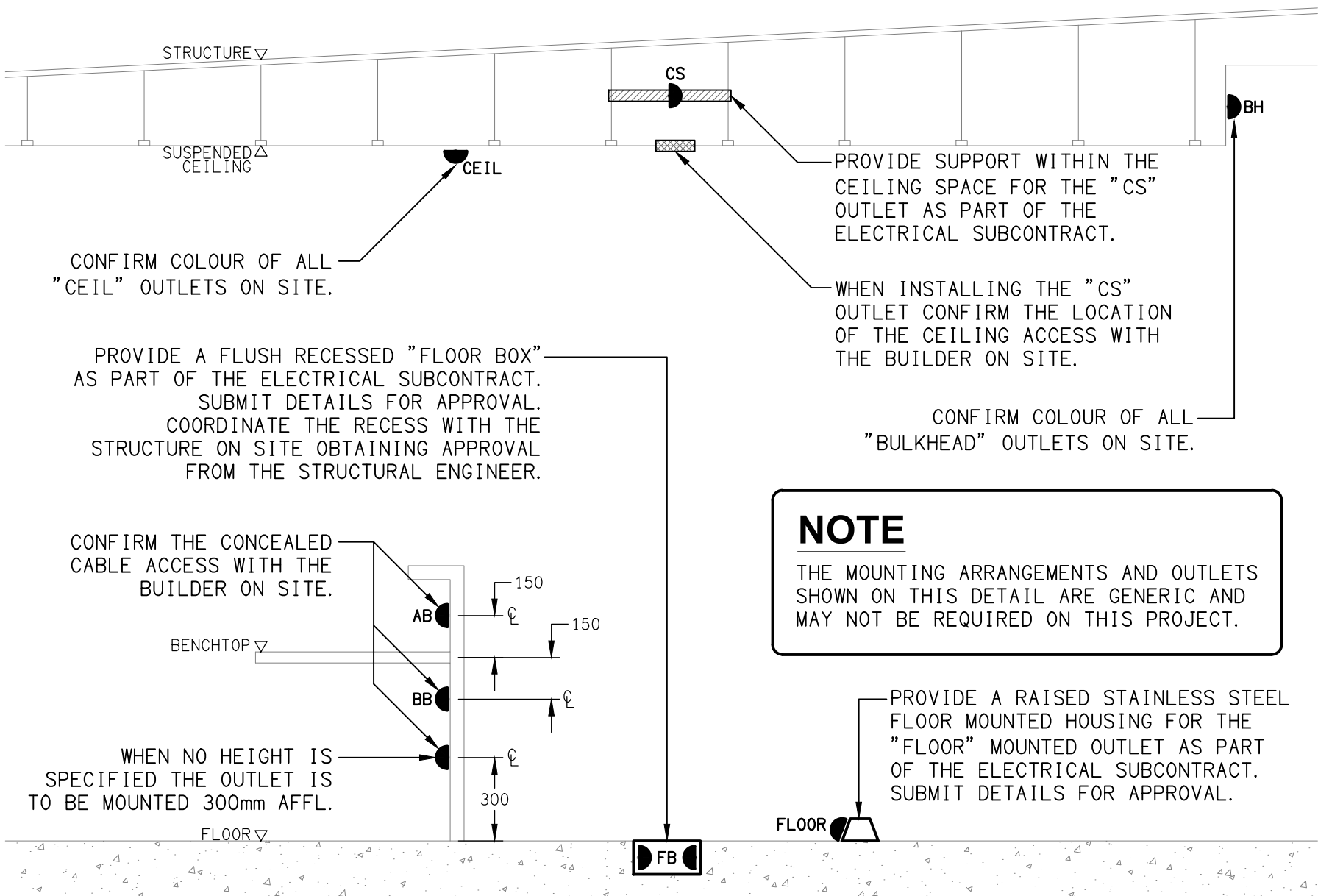
NOTES

1. THE EMERGENCY LIGHT UNSWITCHED ACTIVE / GENERAL LIGHTING SWITCHED ACTIVE CIRCUIT ARRANGEMENT AND CONTROL IS TYPICAL FOR ALL CIRCUITS SUPPLYING EMERGENCY LIGHTS.
2. PROVIDE ADDITIONAL CONTROL RELAYS (CRx) CONFIGURED AS PER CRa AND CRb FOR ALL ADDITIONAL LIGHTING CIRCUITS THAT SUPPLY LIGHTS IN THE VICINITY OF THE EMERGENCY LIGHTS.

SCHEMATIC

EMERGENCY LIGHTING

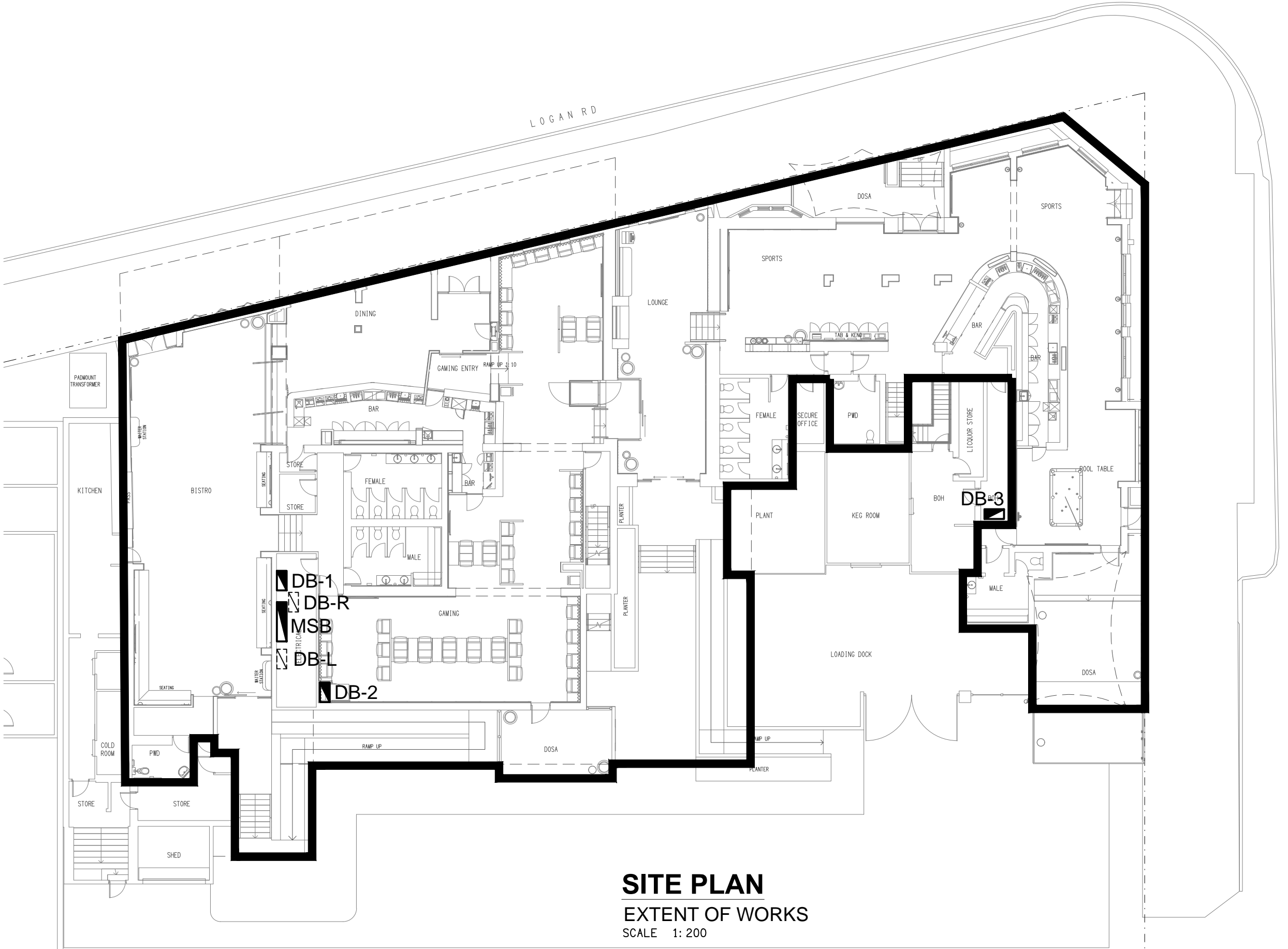
NOT TO SCALE



DETAIL

TYPICAL OUTLET MOUNTINGS

NOT TO SCALE



SITE PLAN

EXTENT OF WORKS

SCALE 1: 200

<div>ELECTRICAL DESIGN GROUP BRISBANE PTY LTD ACN 092 710 793</div> <div>TRADING AS: ELECTRICAL DESIGN GROUP</div>	<div>THE COPYRIGHT OF THIS DRAWING REMAINS THE PROPERTY OF THE ELECTRICAL DESIGN GROUP.</div>	<div><div><div></div></div><div>ELECTRICAL DESIGN GROUP</div><div>ELECTRICAL BUILDING SERVICES CONSULTANTS</div><div>BRISBANE GOLD COAST</div><div>P.O.Box 15, Sherwood Q.4075 Phone: (07) 3278 4375 Email: brisbane@edg.net.au Web: www.edg.net.au</div></div>	<div>PROJECT: DRAWING: HOLLAND PARK HOTEL</div>	<div>DRAWING: ELECTRICAL SERVICES LEGEND & DETAILS</div>		
	<div>USE FIGURED DIMENSIONS IN PREFERENCE TO SCALE.</div>		<div>945 LOGAN ROAD, HOLLAND PARK</div>	<div>SCALE: AS SHOWN AT A1</div>		
	<div>ALL DIMENSIONS TO BE VERIFIED ONSITE.</div>			<div>PROJECT NO: C3540a</div>		
				<div>DRAWING NO: E01</div>		
				<div>REVISION: D</div>		